

Market Commentary

Overnight global action:

On 27th May 2026, US market delivered a positive performance with S&P500 up by +43.42 pts (0.58%), Dow Jones up by +25.49 pts (0.05%) and Nasdaq up by +250.32 pts (0.84%). Gift Nifty grew by 201.5 pts (0.85%) indicating Indian markets will open positively.

Advance-Decline ratio on NSE was 2067:2139 and on BSE was 1656:1646 which showed balance in the overall markets.

Index Options Data Analysis:

Sensex max call OI is at 77000 max put OI is at 75000 with PCR of 0.77
Nifty max call OI and put OI both are at 23900 with PCR of 0.9
Bank Nifty max call OI is at 55100 max put OI is at 55000 with PCR of 0.75

Securities in Ban for F&O Trade:

NIL

Sector Performance:

NIFTY AUTO index grew by 1.45% driven by Exide Industries Ltd. (+7.6%) and Tube Investments of India Ltd. (+5.64%)

NIFTY FMCG index declined by -0.17% driven by Radico Khaitan Ltd. (-3.9%) and ITC Ltd. (-3.89%)

NIFTY REALTY index grew by 0.33% driven by Lodha Developers Ltd. (+2.2%) and Godrej Properties Ltd. (+1.61%)

NIFTY OIL & GAS index declined by -0.27% driven by Oil & Natural Gas Corporation Ltd. (-4.7%) and Aegis Vopak Terminals Ltd. (-4.68%)

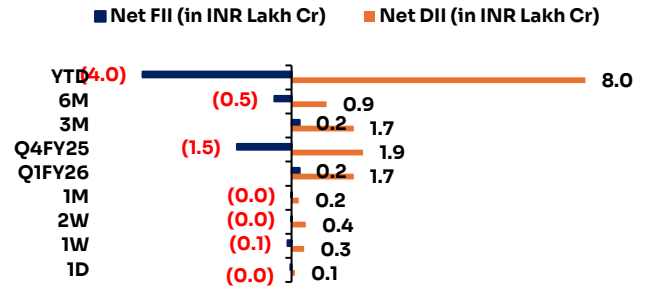
NIFTY CHEMICALS Index grew by 0.69% driven by Bayer CropScience Ltd. (+2.6%) and Aarti Industries Ltd. (+1.99%)

NIFTY PSU BANK index grew by 0.31% driven by Bank Of India (+1.4%) and Canara Bank (+0.76%)

Now listen to the daily market update



Fund Flow	Buy	Sell	Net
FII/FPI	11,419	12,461	-1,043
DII	16,893	13,072	3,821



Indian Indices	CMP	1D	YTD	P/E x
Gift Nifty	23,860	0.9%	-9.2%	21.6
Sensex 30	75,868	-0.2%	-11.0%	19.8
Nifty 50	23,907	0.0%	-8.5%	21.7
India VIX	15	-7.1%	58.1%	
Nifty Bank	54,854	-0.4%	-7.9%	16.1
Nifty Next 50	71,957	1.4%	3.7%	72.0
Nifty 500	22,967	0.3%	-3.8%	21.6
Nifty Mid 100	62,559	0.4%	3.4%	32.2
Nifty Small 250	17,103	0.6%	2.5%	28.8
USD/INR	96	0.0%	6.5%	
India 10Y	7.0%			
India 2Y	6.6%			
India 1Y	6.2%			
Bank Rate	5.8%			

Global Indices	CMP	1D	YTD	P/E x
S&P 500	7,564	0.6%	10.5%	32.7
Dow Jones	50,670	0.1%	5.4%	24.5
Nasdaq 100	30,224	0.8%	19.7%	49.6
FTSE 100	10,426	-0.8%	5.0%	16.4
CAC 40	8,189	-0.2%	0.5%	24.0
DAX	25,092	-0.3%	2.5%	26.2
Nikkei 225	65,886	1.8%	31.0%	35.2
Hang Seng	25,006	-1.3%	-2.4%	12.1
Shanghai Cor	4,099	0.1%	3.3%	18.5
KOSPI	8,391	2.5%	99.1%	41.5
S&P/ASX 200	8,664	0.8%	-0.6%	22.9

Stocks in the News

TATA CONSULTANCY SERVICES LTD. (CMP: 2281, MARKET CAP: 825286 Cr., SECTOR: IT - SOFTWARE)

The software exporter finalized a multi-year cloud infrastructure migration contract with a premium British retail network to upgrade legacy logistics systems using its proprietary ignio AI suite. This project is projected to expand digital business revenues by 4.2% year-on-year across European operational desks through late FY28. Technical indicators confirm the equity is establishing a strong structural accumulation support zone immediately above the ₹4,150 horizontal baseline.

[Economic Times](#)

RELIANCE INDUSTRIES LTD. (CMP: 1350, MARKET CAP: 1826893 Cr., SECTOR: REFINERIES)

The energy and retail conglomerate executed a binding infrastructure expansion framework to scale up retail dark-store operations by adding 450 localized distribution hubs across Tier-2 cities. The strategic program targets a 24% sequential acceleration in grocery delivery speeds to strengthen structural market positioning against rising hyper-local quick commerce platforms. The equity maintains a dominant market weight, holding its long-term simple moving averages on heavy volumes.

[Bloomberg](#)

INFOSYS LTD. (CMP: 1159, MARKET CAP: 470193 Cr., SECTOR: IT - SOFTWARE)

The technology major secured an expansive generative AI and enterprise application optimization contract from a major automotive component group based in Western Europe. Contract delivery parameters run over 48 months, stabilizing forward order book visibility across its core European engineering and manufacturing verticals. [Economic Times](#)

HDFC BANK LTD. (CMP: 759, MARKET CAP: 1167812 Cr., SECTOR: BANK - PRIVATE)

The private sector lender disclosed a 16.8% annualized growth rate in its urban retail advances portfolio, outpacing corporate credit disbursements across regional lending hubs. Net interest margins have stabilized near the 3.45% threshold as corporate cost of funds flattened out during the previous domestic liquidity cycle. Options open interest concentrations indicate a robust near-term technical support cushion anchored firmly around the ₹1,600 strike.

[Bloomberg](#)

Sectoral Inde	CMP	1D	YTD	P/E x
Nifty Auto	26,864	1.5%	-4.7%	22.1
Nifty IT	28,907	-0.3%	-23.7%	22.6
Nifty Fin Ser	25,752	-0.7%	-6.7%	16.8
Nifty Pharma	24,716	0.2%	8.8%	40.7
Nifty Services	30,105	-0.3%	-10.6%	33.1
Nifty Cons Du	35,519	0.6%	-3.4%	48.1
Nifty PSE	10,475	0.4%	6.3%	11.0
Nifty FMCG	50,142	-0.2%	-9.6%	34.5
Nifty Pvt Bank	26,639	-0.5%	-7.3%	10.0
Nifty PSU Banl	8,225	0.3%	-3.6%	13.5
Nifty Cons	11,474	0.7%	-6.6%	40.5
Nifty Realty	785	0.3%	-10.6%	34.1
Nifty Infra	9,499	0.9%	-1.2%	22.0
Nifty Energy	41,536	1.8%	17.6%	13.2
Nifty Health	15,684	0.1%	7.1%	37.5
Nifty India Mfg	16,163	1.3%	4.9%	30.1
Nifty Metal	13,718	1.7%	22.8%	24.6
Nifty Oil & Gas	11,484	-0.3%	-6.1%	17.6

Derivatives Position (Combined#)

Stock	% Chg OI	%Chg LTP
Long		
SOLARINDS	8.7	3.9
JSWENERGY	7.6	1.4
ADANI PORTS	6.3	0.6
TATA CONSUM	5.8	0.8
AMBER	5.6	0.6
Short		
VEDL	15.4	-2.6
MUTHOOTFIN	15.4	-6.7
IRFC	8.5	-1.5
PREMIERENE	8.1	-0.5
NUVAMA	14.9	0.0
Long Unwinding		
LICHSGFIN	-3.4	-0.2
KAYNES	-3.0	-0.8
NESTLEIND	-2.8	-2.4
POLYCAB	-2.8	-0.8
GMR AIRPORT	-2.5	-3.2
Short Covering		
TMPV	-9.9	5.5
BHARTIARTL	-7.1	1.0
MCX	-6.3	1.1
POWERINDIA	-3.8	0.8

**LARSEN & TOUBRO LTD. (CMP: 4046, MARKET CAP: 556593 Cr.,
SECTOR: ENGINEERING - CONSTRUCTION)**

The engineering consortium's heavy civil construction business segment secured an infrastructure engineering mandate valued between ₹2,500 crore and ₹5,000 crore for high-speed rail sections. This project deepens the consolidated order pipeline, maintaining robust visibility for execution billings across the next three fiscal cycles. The underlying equity is trading in a structural upward channel, exhibiting strong relative strength against broader indices.

[Economic Times](#)

Commodity:	CMP	1D	YTD
Gold (\$)	4,529	-0.1%	0.3%
Silver (\$)	76.2	0.4%	0.1%
Brent Oil (\$)	93.0	-0.7%	-0.2%
WTI Oil (\$)	87.9	-1.2%	-20.6%

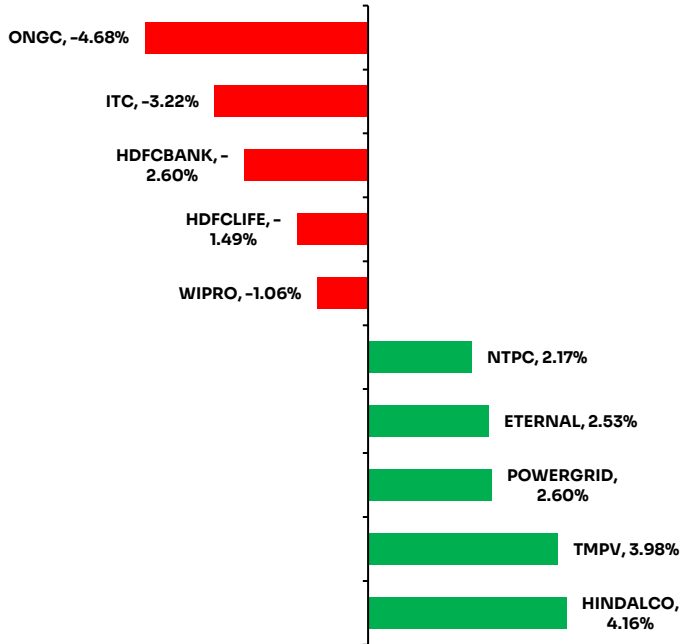
Currency	CMP	1D	YTD
USD/INR	95.7	0.0%	0.0%
EUR/INR	111.5	0.0%	0.1%
GBP/INR	128.6	0.0%	0.1%
JPY/INR	0.6	0.0%	0.1%
EUR/USD	1.2	0.0%	0.1%

Securities Lending & Borrowing Scheme (SLBS)

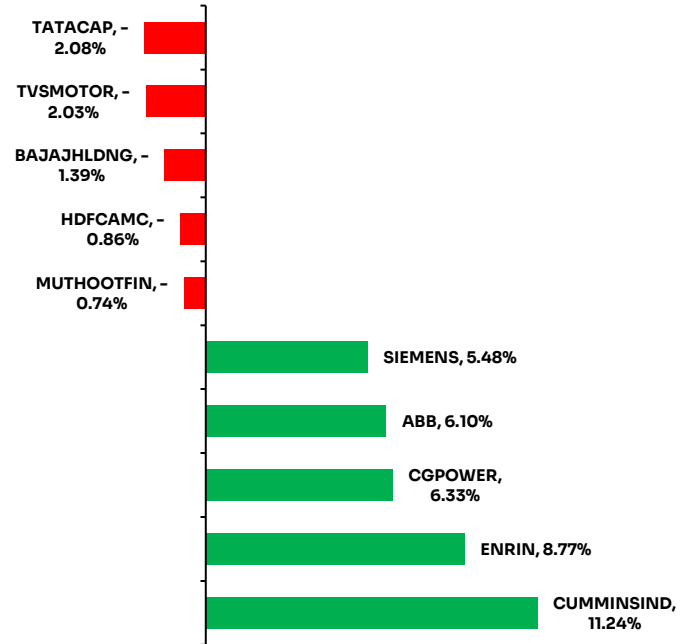
Company	Under.Ltp	Fut.Ltp	Spread (%)
SBICARD	625.50	612.90	2.01
KPITTECH	773.40	759.95	1.74
TATAELXSI	4327	4275.2	1.2
BDL	1,288.90	1,274.00	1.16
TATASTEEL	214.51	212.35	1.01

Top Gainers and Losers

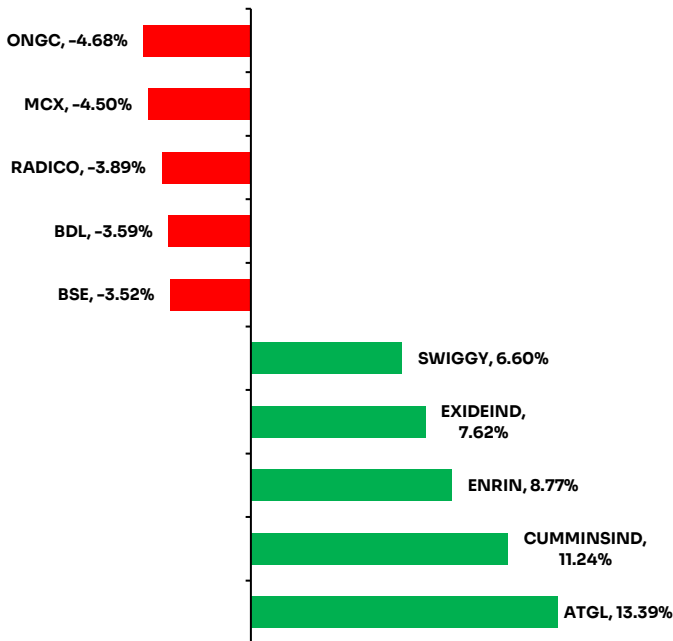
Nifty 50 index



Nifty Next 50 index



Nifty 200 index



52 Week High

Stock	LTP	New 52W high	Prev 52W high	Prev 52W high date
ADANIPOWER	249	253	253	27-May-26
ADANIPTS	1,823	1,843	1,843	27-May-26
ADANIPT	2,985	3,028	3,028	27-May-26
BAJAJ-AUTO	10,801	10,834	10,834	27-May-26
ADANIGREEN	1,493	1,518	1,518	27-May-26

52 Week Low

Stock	LTP	New 52W low	Prev 52W low	Prev 52W low date
SBICARD	623	612	616	2-Apr-26
CENTRALBK	31	31	31	27-May-26
PINELABS	147	135	135	27-May-26
PINELABS	147	135	135	27-May-26
JYOTICNC	658	648	648	27-May-26

Volume Shockers

Stock	Vol (000)	1W avg vol (000)	2W avg vol (000)	LTP (INR)
FINPIPE	31,807	6,774	3,497	193
TVSSRICHAK	98	21	12	4,030
COFFEEDAY	44,624	9,618	5,126	29
IVZINGOLD	898	194	109	136
MOHITIND	153	34	18	25
RAMCOIND	3,244	721	384	313
EBBETFO433	103	23	14	1,266
PENIND	17,101	3,936	2,317	173
JOCIL	276	65	33	149
GRADIENTE	2,326	548	289	4
MAXIND	775	183	105	168
GRANULES	11,996	2,863	1,830	787
FILATEX	7,193	1,734	1,087	47
TIMEX	8,013	1,939	1,018	428
NDTV	7,676	1,863	1,179	87
DBEIL	448	109	69	87
CARRARO	3,254	796	421	558
LFIC	42	10	7	153
VETO	467	115	77	124
MANCREDIT	1,151	287	175	191
USHAMART	5,795	1,445	946	512
THAKDEV	3	1	0	135
PGHL	486	122	66	6,275
ZEEL	122,229	31,122	23,327	91
0	0	0	0	0

Bulk Deals

Security Name	Client Name	Buy / Sell	Qty (in 000)	Price (in 000)
APOLLO	Hrti Private Limited	BUY	1426	422.7
APOLLO	Hrti Private Limited	SELL	2305	422.4
APOLLO	Jump Trading Financial India Private Limited	BUY	2321	423.4
APOLLO	Jump Trading Financial India Private Limited	SELL	2321	422.7
APOLLO	Microcurves Trading Private Limited	SELL	2260	423.4
COFFEEDAY	Laxmi Trade Solutions	BUY	1200	30.5
COFFEEDAY	Laxmi Trade Solutions	SELL	1200	30.4
COFFEEDAY	Neo Apex Share Broking Services Llp	SELL	2240	30.5
COFFEEDAY	Neo Apex Share Broking Services Llp	BUY	2240	29.3
COFFEEDAY	Nk Securities Research Private Limited	SELL	1427	29.2
COFFEEDAY	Nk Securities Research Private Limited	BUY	1427	29.2
COFFEEDAY	Yuga Stocks And Commodities Private Limited	SELL	5946	29.4
COFFEEDAY	Yuga Stocks And Commodities Private Limited	BUY	6446	30.3
DAVANGERE	Arihant Capital Markets Limited	SELL	6758	4.2
DAVANGERE	Arihant Capital Markets Limited	BUY	19440	4.1
DELTACORP	Hrti Private Limited	SELL	1608	83.1
DELTACORP	Hrti Private Limited	BUY	1749	82.7
DIAMONDYD	Authum Investment & Infrastructure Limited	BUY	131	1,123.2
E2ERAIL	Multiplier Share And Stock Advisors Pvt Ltd	BUY	94	251.0
EASEMYTRIP	Parnit Ventures Private Limited	BUY	25395	7.7
EASEMYTRIP	Parnit Ventures Private Limited	SELL	26400	7.5
EASEMYTRIP	Plastomatic Packaging Private Limited	BUY	14082	7.8
EASEMYTRIP	Plastomatic Packaging Private Limited	SELL	24082	7.9
EASEMYTRIP	Sw Capital Private Limited	BUY	31489	7.7
EASEMYTRIP	Sw Capital Private Limited	SELL	36071	7.8
ECOLINE	Mansi Share And Stock Broking Private Limited	SELL	112	148.2
ECOLINE	Prasoon Pankaj	BUY	144	149.6
GCHOTELS	Alacrity Securities Ltd	BUY	60	119.2
GCHOTELS	Alacrity Securities Ltd	SELL	174	110.7
GCSL	Mansukh Securities & Finance Limited	SELL	136	404.9
GCSL	Mansukh Securities & Finance Limited	BUY	149	404.0
GOCOLORS	Achintya Securities Limited	SELL	272	347.9
GOCOLORS	Achintya Securities Limited	BUY	366	346.5
GOCOLORS	Parth Infin Brokers Pvt Ltd	SELL	473	347.7
GOCOLORS	Parth Infin Brokers Pvt Ltd	BUY	488	349.1
GOCOLORS	Ramdoot Realtors Pvt Ltd	SELL	927	346.5
GOCOLORS	Ramdoot Realtors Pvt Ltd	BUY	966	346.7
INDOCO	Icici Prudential Mutual Fund	BUY	684	198.0
INNOMET	D3 Stock Vision Llp	SELL	89	83.5
INNOMET	Multiplier Share And Stock Advisors Pvt Ltd	BUY	89	83.5
JKLAKSHMI	Bengal & Assam Company Limited	BUY	869	615.0
JKLAKSHMI	Dwarkesh Energy Limited	SELL	869	615.0
JPOWER	Hrti Private Limited	SELL	25068	22.1
JPOWER	Hrti Private Limited	BUY	54953	22.2

Security Name	Client Name	Buy / Sell	Qty (in 000)	Price (in 000)
JPOWER	Jump Trading Financial India Private Limited	SELL	43766	21.6
JPOWER	Jump Trading Financial India Private Limited	BUY	43766	21.5
JPOWER	Qe Securities Llp	BUY	30179	21.3
JPOWER	Qe Securities Llp	SELL	35185	22.4
KCK	Shardul Sandeep Diwan	BUY	368	13.6
KRISHPP	Mangsidesh Investments Private Limited	BUY	35	115.0
KRISHPP	Talisman Securities Private Limited	SELL	35	115.0
MANCREDIT	Chaubara Eats Private Limited	BUY	125	190.7
MANCREDIT	Chaubara Eats Private Limited	SELL	128	190.5
MANCREDIT	Hjs Securities Private Limited	BUY	157	190.4
MANCREDIT	Hjs Securities Private Limited	SELL	171	190.8
MANCREDIT	Jaydeep Chandubhai Kotwani	BUY	109	190.7
MANCREDIT	Jaydeep Chandubhai Kotwani	SELL	109	191.0
MARKOLINES	Hi Klass Trading & Investment Limited	BUY	262	171.2
MARKOLINES	Hi Klass Trading & Investment Limited	SELL	277	172.2
MARKOLINES	Vistaar Trading Service Private Limited	SELL	139	171.9
MARKOLINES	Vistaar Trading Service Private Limited	BUY	139	172.2
NARMADA	Soham Fincare India Llp	SELL	305	36.8
NGIL	Kunal Ahuja	SELL	150	41.9
ONYX	Kunal Bhardwaj	BUY	1722	30.6
ONYX	Sanjay Jain	SELL	1774	30.6
PENIND	Nk Securities Research Private Limited	SELL	948	174.3
PENIND	Nk Securities Research Private Limited	BUY	948	174.2
REFEX	Junomoneta Finsol Private Limited	SELL	721	324.6
REFEX	Junomoneta Finsol Private Limited	BUY	786	326.0
REFEX	Microcurves Trading Private Limited	BUY	770	327.5
REFEX	Microcurves Trading Private Limited	SELL	770	327.5
SAIFL	Amitagarwal	SELL	392	5.5
SCODATUBES	Hutoxy Kersi Bhadha	SELL	308	127.8
WOL3D	Ankit Agarwal	SELL	46	203.1
WOL3D	Kaushal Kothari	SELL	27	203.1
WOL3D	Kaushal Kothari	BUY	81	203.1
WOL3D	Neo Apex Share Broking Services Llp	BUY	72	203.1
ZEEL	Qe Securities Llp	BUY	4758	90.5
ZEEL	Qe Securities Llp	SELL	4856	90.2
VIDYAWIRES	Yuga Stocks And Commodities Private Limited	SELL	858	101.4
VIDYAWIRES	Yuga Stocks And Commodities Private Limited	BUY	1215	100.9

Block Deals

Security Name	Client Name	Buy / Sell	Qty (in 000)	Price (in 000)
No Block Deals				

Event Calendar – Corporate Action (Financial Results/ Dividend/other business matters)

Company	Purpose
Archidply Decor Limited	Financial Results
Aegis Logistics Limited	Financial Results/Divide
Agro Phos India Limited	Financial Results/Other business matters
Anlon Healthcare Limited	Financial Results
Alpa Laboratories Limited	Financial Results
Archies Limited	Financial Results
Asian Paints Limited	Financial Results/Divide
Bartronics India Limited	Financial Results
Ausom Enterprise Limited	Financial Results/Divide
Antony Waste Handling Cell Limited	Financial Results/Divide
Bafna Pharmaceuticals Limited	Financial Results
Bajaj Hindusthan Sugar Limited	Financial Results
Shree Tirupati Balajee Agro Trading	Financial Results/Other
Bang Overseas Limited	Financial Results
Bannari Amman Spinning Mills Limit	Financial Results/Divide
BEML Limited	Financial Results/Divide
BF Investment Limited	Financial Results/Divide
Bharatiya Global Infomedia Limited	Financial Results
Bhandari Hosiery Exports Limited	Financial Results/Divide
Bharati Defence and Infrastructure L	Financial Results
Bhartiya International Limited	Financial Results
Blue Blends (I) Limited	Financial Results
Bohra Industries Limited	Financial Results
Brooks Laboratories Limited	Financial Results
Bodhi Tree Multimedia Limited	Financial Results/Other
Cerebra Integrated Technologies Lir	Financial Results
Concord Biotech Limited	Financial Results/Divide
CP Capital Limited	Financial Results
Davangere Sugar Company Limited	Financial Results
Valor Estate Limited	Financial Results
Deccan Cements Limited	Financial Results/Divide
Dreamfolks Services Limited	Financial Results
Ducon Infratechnologies Limited	Financial Results/Other
Dynemic Products Limited	Financial Results
Dynemic Products Limited	Financial Results/Divide
Everest Kanto Cylinder Limited	Financial Results/Divide
EMS Limited	Financial Results
Equipp Social Impact Technologis	Financial Results/Other business matters
Eros International Media Limited	Financial Results/Other business matters
Fertilizers and Chemicals Travancore	Financial Results

Company	Purpose
Filatex Fashions Limited	Financial Results
Fischer Medical Ventures Limited	Financial Results/Dividend
Foods & Inns Limited	Financial Results/Dividend/Other business matter:
GANESH HOUSING LIMITED	Financial Results/Dividend
Ganga Forging Limited	Financial Results
GACM Technologies Limited	Financial Results
GACM Technologies Limited	Financial Results
GB Global Limited	Financial Results/Other business matters
Generic Engineering Construction a	Financial Results
Genesys International Corporation L	Financial Results/Other business matters
GFL Limited	Financial Results
Globe International Carriers Limited	Financial Results/Other business matters
Gujarat Industries Power Company L	Financial Results/Dividend
Glenmark Pharmaceuticals Limited	Financial Results/Dividend
GOCL Corporation Limited	Financial Results/Dividend
AION-TECH SOLUTIONS LIMITED	Financial Results
GRM Overseas Limited	Financial Results
Gufic Biosciences Limited	Financial Results/Dividend/Other business matter:
Gujarat Alkalies and Chemicals Limit	Financial Results/Dividend/Other business matter:
Gujarat Gas Limited	Financial Results/Dividend
GVK Power & Infrastructure Limited	Financial Results
Halder Venture Limited	Financial Results
HALEOS LABS LIMITED	Financial Results/Dividend/Other business matter:
Hardwyn India Limited	Financial Results
Hinduja Global Solutions Limited	Financial Results/Other business matters
Hilton Metal Forging Limited	Financial Results
The Hi-Tech Gears Limited	Financial Results/Dividend/Other business matter:
HT Media Limited	Financial Results
ICDS Limited	Financial Results
Ice Make Refrigeration Limited	Financial Results/Dividend
INCREDIBLE INDUSTRIES LIMITED	Financial Results/Divide
Indian Card Clothing Company Limit	Financial Results/Other
InterGlobe Aviation Limited	Financial Results
Indo Us Biotech Limited	Financial Results
Ingersoll Rand (India) Limited	Financial Results/Divide
Inox Green Energy Services Limited	Financial Results/Other
Inox Wind Limited	Financial Results/Other
Intense Technologies Limited	Financial Results/Other
IPCA Laboratories Limited	Financial Results/Divide
Indian Renewable Energy Developm	Dividend
Indian Renewable Energy Developm	Financial Results
IL&FS Investment Managers Limited	Financia
Jamna Auto Industries Limited	Financia

Company	Purpose
Keynote Financial Services Limited	Financial Results/Dividend/Other business matters
Kalyani Investment Company Limited	Financial Results/Dividend
Kingfa Science & Technology (India)	Financial Results
Kitex Garments Limited	Financial Results/Dividend
Knowledge Marine & Engineering Works	Financial Results/Other business matters
KNR Constructions Limited	Financial Results/Dividend
Kothari Products Limited	Financial Results/Dividend
Kridhan Infra Limited	Financial Results
KSS Limited	Financial Results
Lancor Holdings Limited	Financial Results/Dividend/Other business matters
Lasa Supergenerics Limited	Financial Results
LCC Infotech Limited	Financial Results
Lovable Lingerie Limited	Financial Results
Lumax Auto Technologies Limited	Financial Results/Dividend/Other business matters
Maan Aluminium Limited	Financial Results/Other business matters
Madhav Marbles and Granites Limited	Financial Results/Other business matters
Mamata Machinery Limited	Financial Results
Manaksia Limited	Financial Results
Mangalam Organics Limited	Financial Results
Mcleod Russel India Limited	Financial Results
Medplus Health Services Limited	Financial Results
Mishra Dhatu Nigam Limited	Financial Results/Dividend
Mirza International Limited	Financial Results
M K Proteins Limited	Financial Results/Other business matters
MMTC Limited	Financial Results/Other business matters
Modi Rubber Limited	Financial Results
Mohit Industries Limited	Financial Results
Mstc Limited	Financial Results/Dividend
Munjaj Showa Limited	Financial Results/Dividend
Murudeshwar Ceramics Limited	Financial Results
Nagreeka Exports Limited	Financial Results
Narmada Agrobases Limited	Financial Results/Stock Split
Natco Pharma Limited	Financial Results
NCL Industries Limited	Financial Results/Dividend/Other business matters
North Eastern Carrying Corporation	Financial Results
NIBE Limited	Financial Results/Dividend
Nitiraj Engineers Limited	Financial Results
NMDC Limited	Financial Results/Dividend
NMDC Steel Limited	Financial Results
Nureca Limited	Financial Results/Other business matters
Orissa Bengal Carrier Limited	Financial Results
Olectra Greentech Limited	Financial Results/Dividend
Onelife Capital Advisors Limited	Financial Results/Fund Raising
Oricon Enterprises Limited	Financial Results/Dividend
PAKKA LIMITED	Financial Results/Dividend/Fund Raising/Other business matters
Palred Technologies Limited	Financial Results/Other business matters
Panacea Biotec Limited	Financial Results/Dividend

Company	Purpose
Panacea Biotec Limited	Financial Results/Dividend
Panama Petrochem Limited	Financial Results/Dividend
Pansari Developers Limited	Financial Results
Pashupati Cotspin Limited	Financial Results
Peninsula Land Limited	Financial Results
Plaza Wires Limited	Financial Results
Praxis Home Retail Limited	Financial Results
Premier Explosives Limited	Financial Results/Dividend
Prime Securities Limited	Financial Results/Dividend
Priti International Limited	Financial Results
Prozone Realty Limited	Financial Results
Race Eco Chain Limited	Financial Results
Radaan Mediaworks India Limited	Financial Results
Radiant Cash Management Services	Financial Results/Dividend
Rana Sugars Limited	Financial Results
Reliance Communications Limited	Financial Results/Other business matters
Reliance Chemotex Industries Limited	Financial Results/Dividend
Repro India Limited	Financial Results
Rico Auto Industries Limited	Financial Results/Dividend
RMC Switchgears Limited	Financial Results
R&B Denims Limited	Financial Results
R.P.P. Infra Projects Limited	Financial Results/Other business matters
Rajshree Polypack Limited	Financial Results
RattanIndia Enterprises Limited	Financial Results
Rubicon Research Limited	Financial Results/Dividend
Rushil Decor Limited	Financial Results/Dividend/Other business matters
Ravinder Heights Limited	Financial Results
Sab Events & Governance Now Media	Financial Results
Salasar Techno Engineering Limited	Financial Results
Salona Cotspin Limited	Financial Results/Dividend
S.A.L. Steel Limited	Financial Results/Other business matters
The Sandesh Limited	Financial Results/Dividend/Other business matters
Sarveshwar Foods Limited	Financial Results/Other business matters
SBC Exports Limited	Financial Results/Fund Raising
SECUREKLOUD TECHNOLOGIES LIMITED	Financial Results/Other business matters
Semac Construction Limited	Financial Results
STL Global Limited	Financial Results/Other business matters
Shreeji Shipping Global Limited	Financial Results/Other business matters
Sical Logistics Limited	Financial Results
Silgo Retail Limited	Financial Results
Simbhaoli Sugars Limited	Financial Results
Simbhaoli Sugars Limited	Financial Results
Simbhaoli Sugars Limited	Financial Results
Simbhaoli Sugars Limited	Financial Results
SONAM LIMITED	Financial Results/Other business matters
Spacenet Enterprises India Limited	Financial Results
Spacenet Enterprises India Limited	Dividend

Nifty & Bank Spot – Pivot Levels 29/05/2026

	Closing	Support			Resistance		
		1	2	3	1	2	3
Nifty	23907.15	23849	23791	23724	23974	24041	24099
Bank Nifty	54,853.85	54653	54454	54170	55136	55420	55619

IFCI Ltd – Technical Stock Call – 29/05/2026

Technical Stock Call	Action	Reco	Target	Support	SL
IFCI	BUY	68.38	105	(64-59-54)	50



View – Short Term Bullish

The primary move in the stock commenced from 36.20 (APR 25). Stock started trading the above averages & gradually reached a high of 74.50 (MAY 25). Lower tops were formed, profit booking followed & forming down gaps the stock corrected marking a low of 46.40 (MAR 26).

During the correction phase, the stock traded into a consolidation zone around the averages seeking trend direction during the period MAY 25_MAR 26. Later, the stock attracted buying interest and commenced its up move rallied to mark a high of 66.25 (MAY 26) & recently, after forming higher bottoms, the stock has given a breakout from **Symmetrical Triangle** with a Bullish candle supported by volume reaching to a high of 68.70 (MAY 26), which is higher than the previous swing highs & confirms the strength in the current up move.

MACD & Aroon indicators suggest Positive crossover.

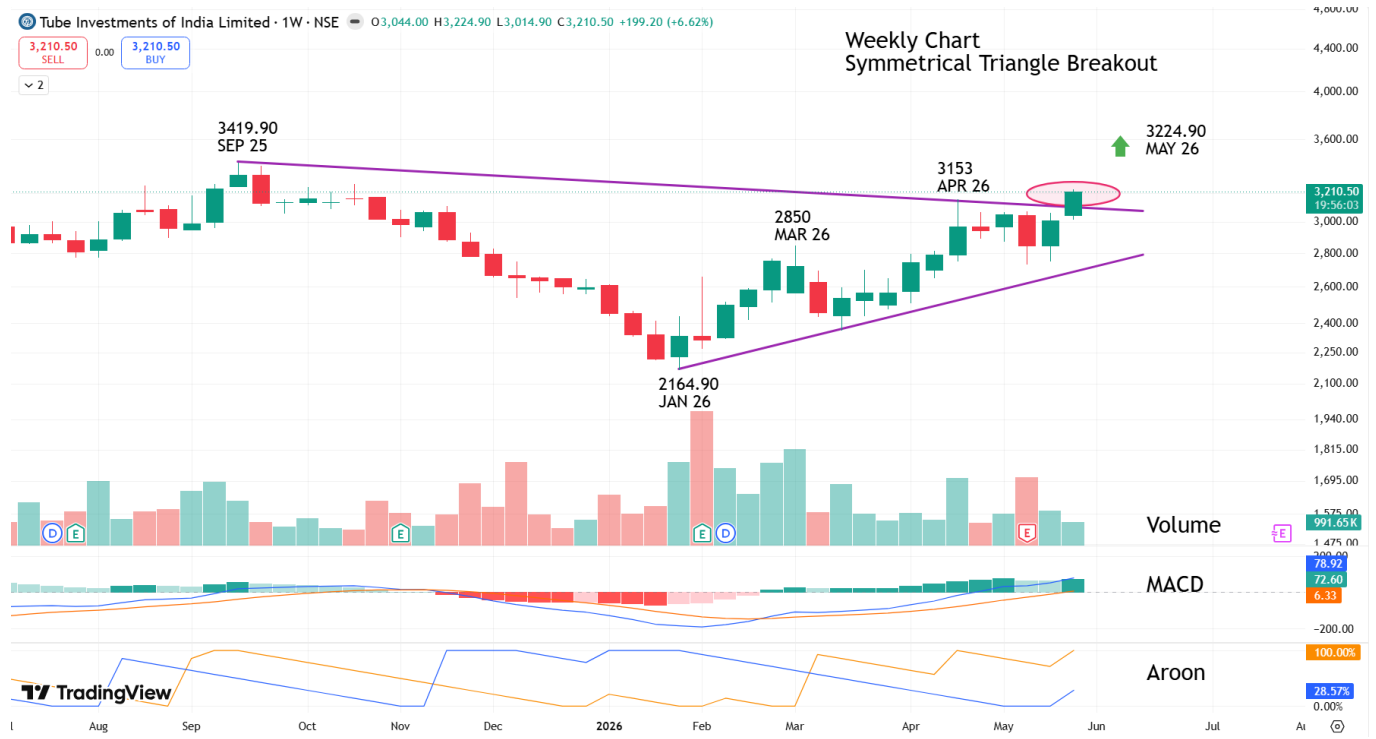
Target of **105** is expected with lower support levels at **(64-59-54)** in case of intermediate fall.

A stop loss at **50** is to be followed for the trade.

All the calls/opinions are subject to Disclosures and Disclaimer <http://goo.gl/8bCMYQ>

Tube Investments of India Ltd – Technical Stock Call – 29/05/2026

Technical Stock Call	Action	Reco	Target	Support	SL
TIINDIA	BUY	3210.50	4300	(3090-3000)-2930-(2870-2790)	2660



View – Medium Term Bullish

The stock commenced its downtrend from 3419.90 (SEP 25). Thereafter, the stock extended its decline to mark a low of 2164.90 (JAN 26), forming lower lows.

The stock attracted buying interest & commenced its up move reaching to a high of 3153 (APR 26), but could not surpass above its previous high & later, witnessed a minor correction.

As observed on the charts, the stock traded in a consolidation zone during the period JAN 26 – MAY 26, while consistently taking support on the upward trendline, indicating underlying strength.

Recently in MAY 2026, after forming higher bottoms, the stock has given a **Symmetrical Triangle Breakout** supported by volume reaching to a high of 3224.90, which is higher than the previous swing highs of 3153 (APR 26).

MACD & Aroon indicators suggest Positive crossover.

Target of **4300** is expected with lower support levels at **(3090-3000)-2930-(2870-2790)** in case of intermediate fall. A stop loss at **2660** is to be followed for the trade.

All the calls/opinions are subject to Disclosures and Disclaimer <http://goo.gl/8bCMYQ>

Global Macro Events (29th May 2026)		
Event	Previous	Forecasted
India		
Government Budget Value MAR	INR-12526.5B	INR-15800.0B
Government Budget Value APR		INR-1700.0B
Bank Loan Growth YoY MAY/15	0.16	
Deposit Growth YoY MAY/15	0.123	
Foreign Exchange Reserves MAY/22	\$688.89B	
M3 Money Supply YoY MAY/15	0.12	
USA		
Fed Balance Sheet MAY/27	\$6.713T	
Goods Trade Balance Adv APR	\$-87.45B	\$-89.0B
Retail Inventories Ex Autos MoM Adv APR	0.004	0.002
Wholesale Inventories MoM Adv APR	0.013	0.007
Fed Bowman Speech		
Fed Paulson Speech		
Chicago PMI MAY	49.2	49.5
Baker Hughes Oil Rig Count MAY/29	425	
Baker Hughes Total Rigs Count MAY/29	558	
China		
Great Britain		
Nationwide Housing Prices MoM MAY	0.40%	0.20%
Nationwide Housing Prices YoY MAY	3.00%	2.90%
BoE Gov Bailey Speech		
Germany		
Import Prices MoM APR	3.60%	0.012
Import Prices YoY APR	2.30%	0.053
Unemployed Persons MAY	3.006M	3.021M
Unemployment Change MAY	20K	15.0K
Unemployment Rate MAY	0.06	0.064
Baden Wuerttemberg CPI MoM MAY	0.01	
Baden Wuerttemberg CPI YoY MAY	0.03	
Bavaria CPI MoM MAY	0.01	
Bavaria CPI YoY MAY	0.03	
Brandenburg CPI MoM MAY	0.01	
Brandenburg CPI YoY MAY	0.03	
Hesse CPI MoM MAY	0.00	
Hesse CPI YoY MAY	0.03	
North Rhine Westphalia CPI MoM MAY	0.00	
North Rhine Westphalia CPI YoY MAY	0.03	

Saxony CPI MoM MAY	0.01	
Saxony CPI YoY MAY	0.03	
Inflation Rate YoY Prel MAY	0.03	0.031
Inflation Rate MoM Prel MAY	0.01	0.003
Harmonised Inflation Rate MoM Prel MAY	0.01	0.003
Harmonised Inflation Rate YoY Prel MAY	0.03	0.03

##STOCK SPECIFIC NEWS**State Bank of India**

India's largest public sector banking enterprise advanced its institutional funding programs, securing formal approvals to deploy capital-augmenting tier-bonds to support broad-based credit advances. Corporate loan books exhibit an 18.2% acceleration year-on-year, driven by sustained credit utilization across heavy industrial manufacturing and green energy capex corridors. Technical indicators signal an accumulation pattern with increasing institutional volume bars.

[Business Standard](#)

Bharti Airtel

The telecom operator initiated enterprise data service pricing optimization matrices across premium postpaid corporate accounts to drive incremental gains in nationwide cellular market share. Analysts model this action to support consolidated Average Revenue Per User expansions toward the ₹245 mark by the conclusion of the fiscal year. The stock shows clear technical resilience, maintaining its critical exponential moving averages.

[Mint](#)

Maruti Suzuki India

The passenger vehicle manufacturer finalized updated production schedules to increase utility vehicle manufacturing lines by 15,000 units per month to handle strong advance order books. Export shipments across Southeast Asian markets grew 18% sequentially, neutralizing temporary domestic supply chain reconfigurations linked to electronic component transshipments. The equity trades at an attractive forward valuation relative to historical averages.

[Economic Times](#)

Axis Bank

The banking financial institution formalized a co-branded digital consumer credit partnership with a prominent domestic travel aggregator platform to accelerate credit card additions. The program aims to capture premium transaction volumes across urban travel corridors, supporting retail fee income lines by an estimated 4.5% year-on-year. The technical price layout continues to consolidate inside a narrow, well-defined trading envelope.

[Business Standard](#)

Sun Pharmaceutical Industries

The global specialty pharmaceutical firm obtained final production approvals from international regulatory watchdogs for a generic therapeutic solution targeting metabolic lifestyle disorders. Commercial launch schedules are slated for early Q3FY27, expanding current formulation product pipelines across primary North American distribution channels. The equity acts as a defensive institutional anchor, holding long-term trend support.

[Mint](#)

ITC Limited

The diversified enterprise reported that its specialized paperboards division achieved absolute self-sufficiency metrics for primary pulp requirements following the integration of domestic recycling units. The enterprise's consumer goods arm maintains steady volume trends across urban distribution networks, insulating aggregate

operational margins from regional input cost variations. The share price exhibits a classic low-beta configuration.

[Economic Times](#)

ICICI Bank

The private financial institution recorded a 22% annualized surge in multi-channel digital processing volumes, lowering overall transaction servicing overheads across retail touchpoints. Core loan allocations remain structurally tilted toward high-yielding, granular retail advances and verified small business credit lines to protect systemic net interest margins. The stock shows strong institutional accumulation on minor market corrections.

[Bloomberg](#)

Mahindra & Mahindra

The automotive manufacturing business expanded production capacity across its premium utility vehicle platforms by 8,500 units monthly to compress customer delivery waiting periods. The company's farm equipment segment reports stable component inventory pools, supporting operational assembly schedules against near-term global logistics variations. The equity continues to display an outperformance trend on intermediate technical charts.

[Business Standard](#)

Tata Steel

The domestic steel manufacturer optimized operating cost structures across its European blast furnace infrastructure, lowering structural fuel consumption costs per metric tonne. Domestic execution volumes remain underpinned by robust infrastructure steel requirements, buffering consolidated realization figures from international spot price fluctuations. Technical setups show the stock price sustaining above long-term averages.

[Economic Times](#)

Hindustan Unilever

The fast-moving consumer goods enterprise updated its premium product supply architecture across core digital-native and quick-commerce channels to boost volume velocity across major metro areas. Operating margins remain protected through multi-quarter raw material price hedging structures, neutralizing volatile spot pricing trends in agricultural raw materials. Options statistics display significant technical support blocks.

[Mint](#)

NTPC Limited

The public sector utility enterprise operationalized an updated generation block at its central thermal facility, expanding aggregate commercial power generation capacities to record highs. The organization's green energy unit continues to advance preparatory schedules for its upcoming capital market listing to fund renewable infrastructure installations. The stock trades within a well-defined long-term structural uptrend.

[Business Standard](#)

Adani Enterprises

The corporate incubator finalized a structured green hydrogen supply framework with a global shipping line to provide low-carbon fuel alternatives starting in the next calendar year. Capital expenditure allocations for the production facility will be managed via dedicated green credit channels and internal operational resource pooling. The stock price closed higher during recent trade sessions, violating near-term resistance levels.

[Bloomberg](#)

Coal India

The mining major finalized accelerated excavation schedules across its primary coal fields to achieve its updated production target of 850 million tonnes for the financial year. The enterprise allocated fresh capital to deploy automated rail-loading conveyor networks to lower coal transshipment delivery times to state utility grids. The equity retains a high dividend yield profile, attracting long-term value funds.

[Economic Times](#)

Titan Company

The consumer retail brand expanded its physical storefront presence across international business hubs, adding four luxury lifestyle watch and jewelry experience centers. Management maintains its long-term guidance of a 15-18% compound annual growth rate for its core domestic operations over the next three fiscal cycles. The underlying share price is currently executing a standard consolidation pattern near major support.

[Mint](#)

UltraTech Cement

The building materials corporation initiated structural optimization programs across its newly integrated regional grinding assets to compress inbound logistics overheads by 8%. The balance sheet retains its net-cash-positive profile, positioning the enterprise to capture continuing public sector infrastructure cement requirements. The equity represents a preferred industrial proxy for tracking domestic capex trends.

[Business Standard](#)

SECTION 2: CORPORATE ANNOUNCEMENTS

Gammon India Limited / Financial Results Board Meeting Intimation

The engineering and construction company notified the stock exchange that its Board of Directors is scheduled to convene to formally evaluate and approve financial statements for the fiscal year ended March 31, 2026. This process establishes official compliance documentation under listing rules. Market participants are monitoring the disclosures for insights on debt resolution steps.

[Official Filing](#)

Vivimed Labs Limited / Statutory Board Meeting Concluding Schedules

The pharmaceutical enterprise filed an official intimation regarding its forthcoming board session organized to record audited performance metrics for the preceding financial year. The meeting aims to validate international formulation revenue collections and finalize regulatory asset management declarations. The outcome will verify updated working capital leverage lines.

[Official Filing](#)

XL Energy Limited / Regulatory Corporate Compliance Review Meeting

The alternative energy infrastructure provider submitted a formal notice to the exchange outlining its scheduled corporate board meeting designed to process annual financial declarations. The operational focus remains on aligning asset performance statements with updated standard audit practices specified under listing requirements. The documentation details debt restructuring reviews.

[Official Filing](#)

Raghav Productivity Enhancers Limited / Capital Management Strategic Session

The industrial minerals manufacturer informed the bourses that its management committee will hold an executive session to evaluate operational expansion proposals and corporate compliance milestones. The strategic focus centers on scaling up automated mineral processing capacities to fulfill rising export delivery mandates. The meeting coordinates technical funding allocations.

[Official Filing](#)

Savita Oil Technologies Limited / Corporate Business Operations Review

The specialized lubricants and petroleum specialties producer filed a disclosure stating that its executive board will convene to address operational expansion parameters and general business plans. The commercial framework looks to strengthen specialized product distribution across domestic automotive and industrial manufacturing clusters. The documentation establishes compliance tracking.

[Official Filing](#)

Colgate Palmolive (India) Limited / Interim Dividend Capital Distribution

The consumer goods organization finalized operational parameters regarding its announced interim dividend distribution of ₹24 per equity share to registered investors. The capital distribution program is backed by stable internal cash accruals and consistent market realizations across its core oral hygiene product portfolios. The action complies with standard corporate actions guidelines.

[Official Filing](#)

Epigral Limited / Final Dividend Allotment Compliance

The chemical manufacturing corporation submitted its official corporate actions documentation establishing timelines for processing its final dividend distribution of ₹5 per share. The payout architecture reflects steady operational realizations across its specialized chlor-alkali and derivatives manufacturing facilities during the previous fiscal. The distribution follows shareholder approvals.

[Official Filing](#)

Ashok Leyland Limited / Commercial Vehicle Corporate Capital Strategy

The commercial vehicle manufacturer finalized regulatory compliance schedules detailing upcoming interim dividend distributions and capital allocation structures for assembly plant modernizations. The funding program supports technical integration schedules for its expanding alternative fuel truck and bus platforms. The documentation confirms alignment with exchange listing rules.

[Official Filing](#)

Foseco India Limited / Annual Financial Results Corporate Ratification

The metallurgical chemicals supplier filed its verified annual corporate disclosures confirming the completion of final dividend distributions of ₹25 per share. The cash conservation metrics match capital requirements

designed to upgrade precision chemical blending units across domestic manufacturing plants. The filing verifies strict adherence to accounting guidelines.

[Official Filing](#)

Zyduz Lifesciences Limited / Open Market Equity Buyback Execution

The global healthcare organization updated the bourses on its ongoing capital restructuring program executed via a structured equity share buyback mechanism. The buyback framework aims to enhance long-term capital efficiency metrics and distribute surplus financial resources to shareholders in an accretive manner. The operation is managed via designated market desks.

[Official Filing](#)

SECTION 3: MACRO / NON-STOCK NEWS

West Asia Military Friction Driving Global Energy Spot Fluctuations

International energy tracking systems reported increased pricing volatility after targeted airstrikes disrupted regional transport infrastructure, raising immediate risk premiums across commodity desks. Brent crude futures moved up by 2.4% to settle at \$84.60 per barrel, shifting near-term inflation models for major energy-importing economies. Market desks indicate that sustained high crude prices could expand India's current account deficit and pressure domestic landed fuel costs.

[Bloomberg](#) | [Economic Times](#)

Nifty 50 Index Technical Trend Map and Support Baselines

The benchmark Nifty 50 index settled lower at 23,913, logging an intermediate correction of 118 points amid international geopolitical headwinds. Derivatives research desks emphasize that the index continues to defend its 20-day Exponential Moving Average line positioned at 23,750 on a closing basis. Options data for the newly opened June series shows high call writing concentration at the 24,200 strike, defining a technical resistance ceiling.

[Economic Times](#) | [Business Standard](#)

BSE Sensex Structural Support Pivots and Settlement Ranges

The BSE Sensex benchmark dropped 479 points to close at 76,009, tracking defensive risk management patterns seen across global equity segments. Technical research houses note that the 76,000 round-number zone serves as a key institutional accumulation floor, having historically generated solid domestic buying support. The options layout for upcoming trading sessions shows immediate resistance at 76,488, with major put cushions at 75,400.

[Business Standard](#) | [Bloomberg](#)

Sector Rotation Trajectories Favor Defensive Cyclical Capital Allocations

During recent volatile trading sessions, defensive cyclical groups displayed strong relative outperformance against broader equity benchmarks. The Nifty Metal index gained 0.81%, while the Nifty PSU Bank index added 0.42% and Bank Nifty closed 0.27% higher, signaling institutional capital moving toward asset-backed sectors. Quantitative analysts note that this sector rotation helps protect equity portfolios from near-term consumption swings.

[Economic Times](#) | [Business Standard](#)

Monsoon Precipitation Forecasts and Agricultural Output Risks

The India Meteorological Department updated its macroeconomic climate models, projecting cumulative monsoon rainfall at 92% of the Long Period Average. This baseline falls into the below-normal classification, raising structural concerns over rural disposable incomes and agricultural gross value added calculations. Because a significant portion of net sown acreage lacks formal irrigation, uneven rainfall could complicate food inflation management.

[Mint](#) | [RBI](#)

RBI Economic Bulletin Validates Macroeconomic Resilience Profiles

The Reserve Bank of India's updated Bulletin points out that the domestic economy shows strong resilience despite rising external friction and global trade blockages. High industrial manufacturing indices, stable core inflation trends, and improving non-food credit metrics are helping insulate the domestic market from external shocks. However, the central bank notes that volatile energy pricing structures require steady domestic liquidity tracking.

[RBI](#) | [Economic Times](#)

GIFT Nifty Open Indicators Signal Flat Start for Trading Desks

The GIFT Nifty derivatives contract traded near 24,019, reflecting a near-term discount relative to previous spot index options settlement frameworks. This basis configuration signals a flat-to-negative opening session for domestic equities as international brokerages digest overnight geopolitical shifts. Institutional desks recommend that active traders monitor the opening 15-minute price bands to verify support holds.

[Bloomberg](#) | [Economic Times](#)

Bank Nifty Options Distribution Tracks High-Density Support Blocks

The Bank Nifty index showed superior technical strength compared to non-financial indices, establishing a primary support cluster around the 54,800 level. Options data for the newly opened weekly contracts indicates short position concentration across the 55,500 call option strikes, marking a key technical resistance target. The underlying index continues to benefit from positive valuation trends in public banking institutions.

[Business Standard](#) | [Bloomberg](#)

Extreme Summer Heatwaves Challenging Regional Industrial Grids

Climate tracking networks report that an intense summer heatwave across South Asia has pushed regional industrial production corridors to record peak temperatures. This climate pattern introduces load management challenges for electricity grids, leading to localized power reconfigurations and impacting manufacturing output consistency in temperature-sensitive sectors. Economists warn that persistent heatwaves can impact food transport costs.

[Economic Times](#) | [Mint](#)

Derivatives Open Interest Moderation Following Settlement Completion

Following the formal expiration of the high-volume monthly derivatives contracts, quantitative research groups noted a standard structural reduction in aggregate open interest. This position compression is a common feature of a fresh trading series as options pricing models adjust to updated implied volatility figures. Institutional trading desks recommend utilizing calibrated position sizes during this technical transition window.

[Bloomberg](#) | [Business Standard](#)

Silver and Hard Commodities Drawing Safe-Haven Inflow Allocations

Commodity trading desks on the Multi Commodity Exchange recorded an expansion in precious metal allocations, with spot silver prices consolidating near the ₹2,76,500 per kilogram mark. This asset migration is driven by defensive safe-haven capital seeking alternatives to equity market volatility. Commodity specialists note that returning geopolitical risk premiums, paired with industrial electronics manufacturing demand, support metals.

[Business Standard](#) | [Economic Times](#)

Agricultural Gross Domestic Product Metrics and Consumption Linkages

Macroeconomic research highlights that agriculture continues to account for roughly 15% to 16% of India's aggregate Gross Domestic Product, supporting a large segment of the population. Consequently, any variation in monsoon rainfall distribution introduces down-market consumption risks for consumer discretionary lines and entry-level staples. Portfolio managers are shifting allocations toward urban-focused discretionary names.

[Mint](#) | [RBI](#)

Foreign Institutional Investor Outflows Pressure Local Currency Bands

Foreign Institutional Investors net-sold equities worth approximately ₹1,850 crore in cash segments during recent sessions, pointing to global macro uncertainties. This capital movement has introduced mild depreciation pressure on the Indian Rupee, which is trading near historical parameters against the US Dollar. Fixed-income strategists expect the central bank to deploy foreign exchange reserves to manage sharp currency moves.

[Economic Times](#) | [RBI](#)

Global Maritime Freight Rate Hikes Affecting Export Margins

International shipping indices recorded a 4.5% weekly acceleration as merchant shipping lines rerouted container vessels away from sensitive transit corridors, expanding transport times between Asia and Europe. This cargo disruption is raising raw input costs for export-focused domestic sectors, including engineering goods and automotive components. Analysts are adjusting margin assumptions for firms dependent on long-haul transport.

[Bloomberg](#) | [Economic Times](#)

Sovereign Bond Yield Trajectories Flat Following Revenue Disclosures

The Indian 10-year benchmark government bond yield hovered near the 6.98% level, reflecting market confidence in the fiscal management guidelines outlined in recent banking updates. Systemic banking liquidity tracks in a comfortable zone, supported by corporate tax flows and scheduled government spending programs. Fixed-income asset managers anticipate that policy interest rates will remain unchanged at 6.50% in the near term.

[Business Standard](#) | [RBI](#)

Corporate Balance Sheet Interest Coverage Ratio Resilience

A broad-market review of corporate performance figures shows that mid- and large-cap domestic enterprises are entering the current trading series with historically sound interest coverage ratios. Operational efficiencies

gained through corporate cost management programs have helped manufacturing groups protect operating margins from input cost shifts. Investment firms note that this underlying financial health supports valuations.

[Economic Times](#) | [Bloomberg](#)

Industrial Base-Load Electricity Demand Reaches Peak Capacities

India's peak power demand hit a record high of 245 GW during the late May tracking period, driven by summer cooling requirements across major manufacturing zones. Energy sector specialists point out that this generation load requires high utilization metrics across thermal power stations, accelerating fuel inventory draws. The elevated electricity consumption pattern confirms continuing operational speed across factories.

[Business Standard](#) | [Economic Times](#)

Retail Mutual Fund SIP Inflows Form Long-Term Equity Cushion

Depository data shows that retail equity inflows via Systematic Investment Plans maintained strong momentum, tracking an annualized run-rate above ₹21,500 crore. This continuous domestic investment acts as a reliable structural counterweight to foreign portfolio capital shifts driven by global interest rate realignments. Fund managers emphasize that these flows lower overall volatility across mid-cap categories.

[Mint](#) | [Business Standard](#)

Antitrust Compliance Guidelines Targeting Digital Marketplace Networks

The Competition Commission of India updated operational guidelines to reinforce strict platform neutrality standards across leading digital marketplaces and quick-commerce operators. The updated rules look to prevent deep discounting structures and ensure non-discriminatory search results for all independent merchants. Experts indicate these policy modifications will help formalize the digital retail ecosystem.

[Economic Times](#) | [Mint](#)

Semiconductor Component Lead Times Impacting Assembly Frameworks

Technology research houses note that international semiconductor foundry lead times have expanded to 24 weeks due to specialized raw material bottlenecks in East Asia. This component delay has prompted pre-emptive inventory actions among domestic consumer electronics manufacturers to protect assembly schedules. Procurement teams are looking to lock in alternative multi-quarter purchase arrangements.

[Bloomberg](#) | [Economic Times](#)

SEBI Corporate Debt Reforms Lowering Entry Barriers for Retail

The Securities and Exchange Board of India finalized structural updates that reduce the minimum face value requirement for listed corporate bonds issued via private placements to ₹10,000. This regulatory change aims to broaden retail participation in high-yielding corporate debt instruments and deepen secondary market liquidity. Corporate finance teams expect this to support alternate funding avenues.

[Business Standard](#) | [Mint](#)

Sovereign Wealth Fund Portfolio Allocation Trends Favor Infrastructure

Global asset allocation surveys indicate that large sovereign wealth institutions are increasing long-term portfolio weights toward emerging market infrastructure projects, with India remaining a key target. Institutional investors point to predictable long-term regulatory frameworks and high digital public

infrastructure integration as core benefits. This funding trend supports large transportation and clean energy programs.

[Bloomberg](#) | [Business Standard](#)

Physical Gold Import Values Rise Despite Volume Flattening

The World Gold Council's quarterly tracking update indicates that domestic physical gold consumption volume dropped 6% due to high spot prices and prevailing import duty architectures. However, the aggregate value of incoming shipments grew 14%, reflecting the impact of higher global pricing on the merchandise trade balance sheet. Financial planners expect this to support interest in paper gold alternatives.

[Mint](#) | [Economic Times](#)

Domestic Civil Aviation Load Factors Track Steady Travel Demands

The Directorate General of Civil Aviation reported that domestic passenger traffic grew 14.5% year-on-year, supported by vacation travel volumes and the expansion of regional flight routes. Despite high aviation turbine fuel pricing linked to volatile crude benchmarks, average passenger load factors remained above the 88% threshold. This stable demand environment allows domestic carriers to manage cost pressures.

[Economic Times](#) | [Bloomberg](#)

Dedicated Freight Corridor Operations Accelerate Logistics Speeds

The Ministry of Railways disclosed that average freight train transit speeds across operational sections of the Western Dedicated Freight Corridor have reached 62 km/h. This infrastructure improvement reduces container travel times between northern manufacturing hubs and western maritime gateways by approximately 40%. Logistics managers emphasize that these efficiency gains support export competitiveness.

[Business Standard](#) | [Economic Times](#)

Digital Public Infrastructure UPI Transactions Expand Revenue Bases

National technology management agencies reported that financial transaction values routed via the Unified Payments Interface expanded by 32% year-on-year, highlighting deep payment tool adoption. This ongoing shift toward digital options supports tax compliance frameworks, keeping monthly goods and services tax collections steady. Economists note that clear electronic data improves small business lending safety.

[Mint](#) | [RBI](#)

Commercial Real Estate Office Space Absorption Rates Rise

Property consulting firms recorded a 12% year-on-year expansion in premium commercial office space absorption across top-tier cities, led by Global Capability Centers and tech firms. This demand has lowered vacancy rates in primary central business districts, supporting a 6-8% rental appreciation trend. The steady take-up of office properties indicates continuing multinational hiring and resource deployment.

[Bloomberg](#) | [Business Standard](#)

Automotive Component Sourcing Adapts to Diversified Supply Programs

Global automotive supply chain audits show that international vehicle manufacturers have increased parts procurement allocations from domestic precision engineering firms by 28%. This shift is part of broader strategy realignments designed to build alternative production clusters outside traditional single-source zones. Component exporters are adding capital expenditure to meet these multi-year orders.

[Economic Times](#) | [Bloomberg](#)

Premium Hospitality Sector Room Rate Metrics Track Strong Travel

Industry metrics for the domestic hospitality business indicate that Average Room Rates across luxury property assets advanced by 18% year-on-year, driven by corporate events and domestic leisure travel. Mid-scale hospitality groups report similar positive occupancy parameters, supporting revenue per available room figures before the monsoon. Equity analysts favor operators running capital-efficient execution models.

[Business Standard](#) | [Mint](#)

Direct Tax Collections Support Federal Fiscal Consolidation Paths

The Central Board of Direct Taxes reported that net direct tax receipts expanded 16.8% year-on-year, driven by corporate compliance and solid corporate profitability trends. This tax revenue path provides structural support for the government's infrastructure capital spending plans while keeping the fiscal deficit target on track. Bond market participants view this revenue performance as a positive factor for stable domestic credit.

[Mint](#) | [RBI](#)

[UN Report on India's Strong Economic Growth](#)

This video is relevant as it provides an expert broadcast analysis of India's current macroeconomic growth trajectories, policy trends, and economic resilience markers that form the foundation of today's broad-market research report.

Disclosures and Disclaimer

Ventura Securities Limited (VSL) is a SEBI registered intermediary offering broking, depository and portfolio management services to clients. VSL is member of BSE, NSE and MCX-SX. VSL is a depository participant of NSDL. VSL states that no disciplinary action whatsoever has been taken by SEBI against it in last five years except administrative warning issued in connection with technical and venial lapses observed while inspection of books of accounts and records. Ventura Commodities Limited, Ventura Guaranty Limited, Ventura Insurance Brokers Limited and Ventura Allied Services Private Limited are associates of VSL. Research Analyst (RA) involved in the preparation of this research report and VSL disclose that neither RA nor VSL nor its associates (i) have any financial interest in the company which is the subject matter of this research report (ii) holds ownership of one percent or more in the securities of subject company (iii) have any material conflict of interest at the time of publication of this research report (iv) have received any compensation from the subject company in the past twelve months (v) have managed or co-managed public offering of securities for the subject company in past twelve months (vi) have received any compensation for investment banking merchant banking or brokerage services from the subject company in the past twelve months (vii) have received any compensation for product or services from the subject company in the past twelve months (viii) have received any compensation or other benefits from the subject company or third party in connection with the research report. RA involved in the preparation of this research report discloses that he / she has not served as an officer, director or employee of the subject company. RA involved in the preparation of this research report and VSL discloses that they have not been engaged in the market making activity for the subject company. Our sales people, dealers, traders and other professionals may provide oral or written market commentary or trading strategies to our clients that reflect opinions that are contrary to the opinions expressed herein. We may have earlier issued or may issue in future reports on the companies covered herein with recommendations/ information inconsistent or different those made in this report. In reviewing this document, you should be aware that any or all of the foregoing, among other things, may give rise to or potential conflicts of interest. We may rely on information barriers, such as "Chinese Walls" to control the flow of information contained in one or more areas within us, or other areas, units, groups or affiliates of VSL. This report is for information purposes only and this document/material should not be construed as an offer to sell or the solicitation of an offer to buy, purchase or subscribe to any securities, and neither this document nor anything contained herein shall form the basis of or be relied upon in connection with any contract or commitment whatsoever. This document does not solicit any action based on the material contained herein. It is for the general information of the clients / prospective clients of VSL. VSL will not treat recipients as clients by virtue of their receiving this report. It does not constitute a personal recommendation or take into account the particular investment objectives, financial situations, or needs of clients / prospective clients. Similarly, this document does not have regard to the specific investment objectives, financial situation/circumstances and the particular needs of any specific person who may receive this document. The securities discussed in this report may not be suitable for all investors. The appropriateness of a particular investment or strategy will depend on an investor's individual circumstances and objectives. Persons who may receive this document should consider and independently evaluate whether it is suitable for his/ her/their particular circumstances and, if necessary, seek professional/financial advice. And such person shall be responsible for conducting his/her/their own investigation and analysis of the information contained or referred to in this document and of evaluating the merits and risks involved in the securities forming the subject matter of this document. The projections and forecasts described in this report were based upon a number of estimates and assumptions and are inherently subject to significant uncertainties and contingencies. Projections and forecasts are necessarily speculative in nature, and it can be expected that one or more of the estimates on which the projections and forecasts were based will not materialize or will vary significantly from actual results, and such variances will likely increase over time. All projections and forecasts described in this report have been prepared solely by the authors of this report independently of the Company. These projections and forecasts were not prepared with a view toward compliance with published guidelines or generally accepted accounting principles. No independent accountants have expressed an opinion or any other form of assurance on these projections or forecasts. You should not regard the inclusion of the projections and forecasts described herein as a representation or warranty by VSL, its associates, the authors of this report or any other person that these projections or forecasts or their underlying assumptions will be achieved. For these reasons, you should only consider the projections and forecasts described in this report after carefully evaluating all of the information in this report, including the assumptions underlying such projections and forecasts. The price and value of the investments referred to in this document/material and the income from them may go down as well as up, and investors may realize losses on any investments. Past performance is not a guide for future performance. Future returns are not guaranteed and a loss of original capital may occur. Actual results may differ materially from those set forth in projections. Forward-looking statements are not predictions and may be subject to change without notice. We do not provide tax advice to our clients, and all investors are strongly advised to consult regarding any potential investment. VSL, the RA involved in the preparation of this research report and its associates accept no liabilities for any loss or damage of any kind arising out of the use of this report. This report/document has been prepared by VSL, based upon information available to the public and sources, believed to be reliable. No representation or warranty, express or implied is made that it is accurate or complete. VSL has reviewed the report and, in so far as it includes current or historical information, it is believed to be reliable, although its accuracy and completeness cannot be guaranteed. The opinions expressed in this document/material are subject to change without notice and have no obligation to tell you when opinions or information in this report change. This report or recommendations or information contained herein do/does not constitute or purport to constitute investment advice in publicly accessible media and should not be reproduced, transmitted or published by the recipient. The report is for the use and consumption of the recipient only. This publication may not be distributed to the public used by the public media without the express written consent of VSL. This report or any portion hereof may not be printed, sold or distributed without the written consent of VSL. This document does not constitute an offer or invitation to subscribe for or purchase or deal in any securities and neither this document nor anything contained herein shall form the basis of any contract or commitment whatsoever. This document is strictly confidential and is being furnished to you solely for your information, may not be distributed to the press or other media and may not be reproduced or redistributed to any other person. The opinions and projections expressed herein are entirely those of the author and are given as part of the normal research activity of VSL and are given as of this date and are subject to change without notice. Any opinion estimate or projection herein constitutes a view as of the date of this report and there can be no assurance that future results or events will be consistent with any such opinions, estimate or projection. This document has not been prepared by or in conjunction with or on behalf of or at the instigation of, or by arrangement with the company or any of its directors or any other person. Information in this document must not be relied upon as having been authorized or approved by the company or its directors or any other person. Any opinions and projections contained herein are entirely those of the authors. None of the company or its directors or any other person accepts any liability whatsoever for any loss arising from any use of this document or its contents or otherwise arising in connection therewith. The information contained herein is not intended for publication or distribution or circulation in any manner whatsoever and any unauthorized reading, dissemination, distribution or copying of this communication is prohibited unless otherwise expressly authorized. Please ensure that you have read "Risk Disclosure Document for Capital Market and Derivatives Segments" as prescribed by Securities and Exchange Board of India before investing in Securities Market.

Ventura Securities Limited - SEBI Registration No.: INH00001634

Corporate Office: I-Think Techno Campus, 8th Floor, 'B' Wing, Off Pokhran Road No 2, Eastern Express Highway, Thane (W) - 400608